

ELEVATION LEGEND

DIVISION 3 - CONCRETE

(3.A) PRE-CAST SIMULATED LIMESTONE ARCH

DIVISION 4 - MASONRY

- (4.A) RUNNING BOND BRICK (TYPE 1 - DISTRESSED BRICK PAINTED WHITE)
- (4.B) RUNNING BOND BRICK (TYPE 2 - CALVERT ROSE SMOOTH BRICK)
- (4.C) RUNNING BOND BRICK (TYPE 3 - CALVERT 40 MOD #5141)
- (4.D) RUNNING BOND BRICK (TYPE 4 - CONTINENTAL 594 MOD #5639)
- (4.E) RUNNING BOND BRICK (TYPE 5 - OLD RICHMOND 3-115)
- (4.F) RUNNING BOND BRICK (TYPE 6 - STD. 475 MOD)
- (4.G) RUNNING BOND BRICK (TYPE 7 - SANTA FE 3-542)
- (4.H) CULTURED STONE FACING MATERIAL
- (4.J) 12" BRICK "JACK-ARCH"
- (4.K) BRICK SILL COURSE
- (4.L) BRICK SOLDIER COURSE
- (4.M) SPLIT FACE CONCRETE MASONRY UNITS (YBP-72)
- (4.N) BRICK QUOINING
- (4.O) BRICK ROWLOCK COURSE
- (4.P) BRICK HEADER COURSE
- (4.Q) BRICK ARCH

DIVISION 5 - METALS

(5.A) ALUMINUM GUTTER AND DOWNSPOUT SYSTEM

DIVISION 6 - WOOD & PLASTICS

- (6.A) SIMULATED WOOD TRIM BOARD (VARIOUS SIZES)
- (6.B) SIMULATED WOOD COLUMN COVERS (FRP)
- (6.C) SIMULATED WOOD DECORATIVE BRACKETS
- (6.D) SIMULATED WOOD SHUTTERS

DIVISION 7 - THERMAL & MOISTURE PROTECTION

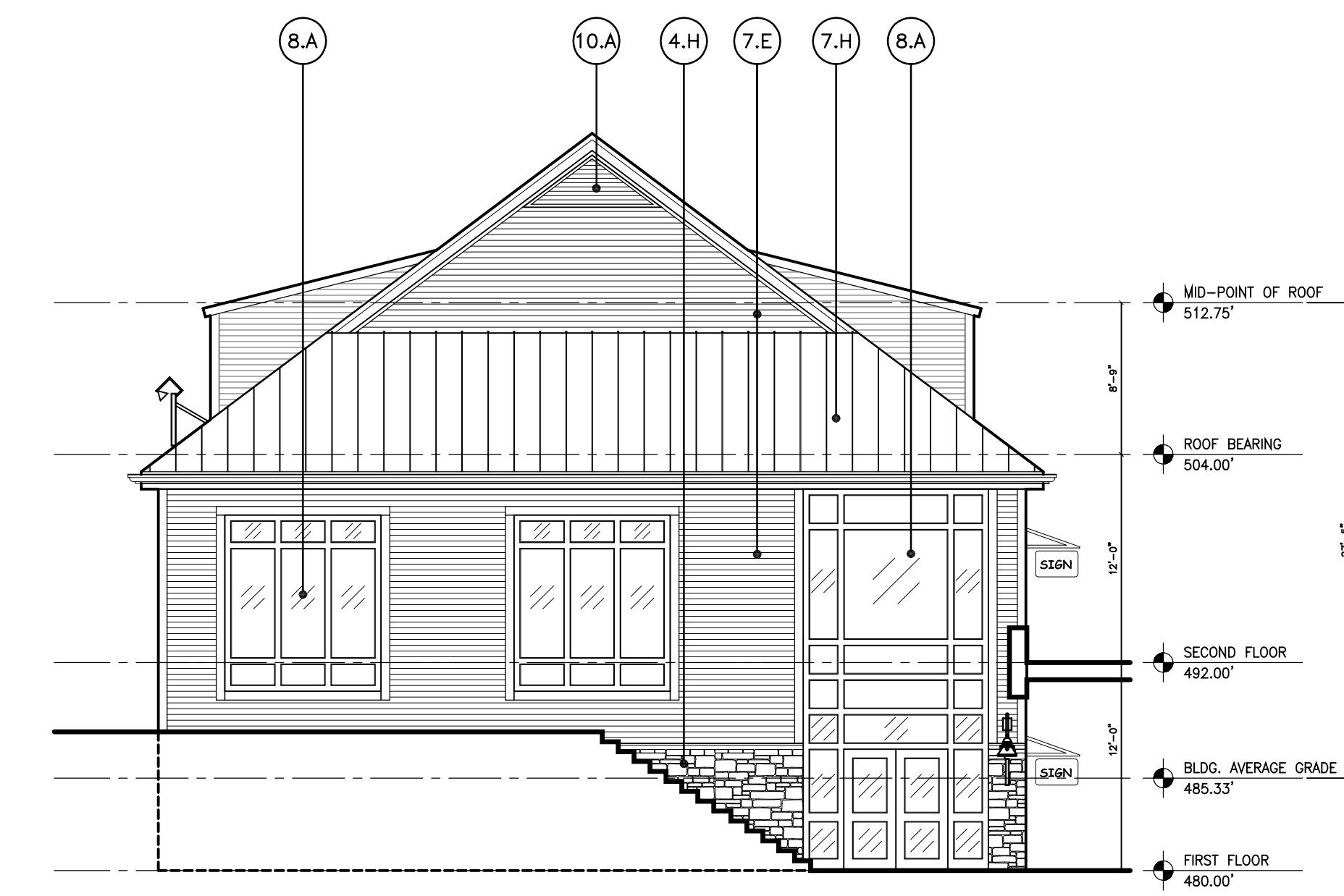
- (7.A) PAC-CLAD STANDING SEAM METAL ROOFING SYSTEM, SEAMS TO BE 18" O.C. (ZINC)
- (7.B) ARCHITECTURAL ASPHALT SHINGLE SYSTEM (SIMULATED SLATE ROOF)
- (7.C) ARCHITECTURAL ASPHALT SHINGLE ROOFING SYSTEM (LIGHT GREY)
- (7.D) FABRIC AWNING
- (7.E) HARDI-PLANK HORIZONTAL LAP SIDING SYSTEM (NAVAJO WHITE)
- (7.F) HARDI-PANEL VERTICAL SIDING SYSTEM (KHAKI BROWN)
- (7.G) BRICK EXPANSION JOINT
- (7.H) PAC-CLAD STANDING SEAM METAL ROOFING SYSTEM, SEAMS TO BE 18" O.C. (MATTE BLACK)
- (7.J) ARCHITECTURAL ASPHALT SHINGLE ROOFING SYSTEM (DARK GREY)
- (7.K) HARDI-PLANK HORIZONTAL LAP BATTON SIDING SYSTEM (KHAKI BROWN)
- (7.L) PAC-CLAD STANDING SEAM METAL ROOFING SYSTEM, SEAMS TO BE 18" O.C. (SILVER)

DIVISION 8 - DOORS & WINDOWS

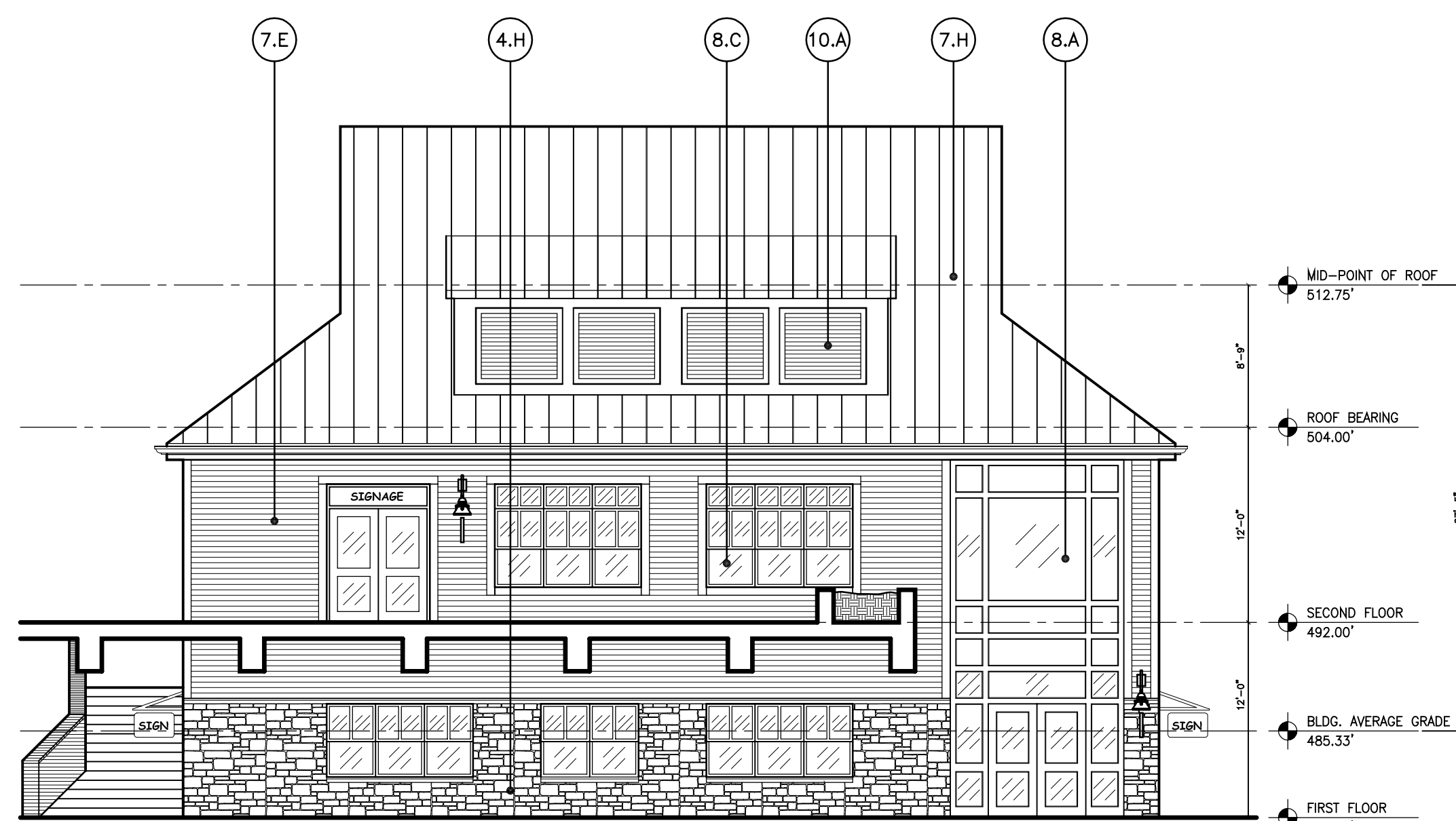
- (8.A) ALUMINUM STOREFRONT
- (8.B) HOLLOW METAL DOOR AND FRAME
- (8.C) ALUMINUM DOUBLE HUNG WINDOW SYSTEM
- (8.D) JAMB MOUNTED, INSULATED METAL ROLL-UP DOOR
- (8.E) TELLER WINDOW

DIVISION 10 - SPECIALTIES

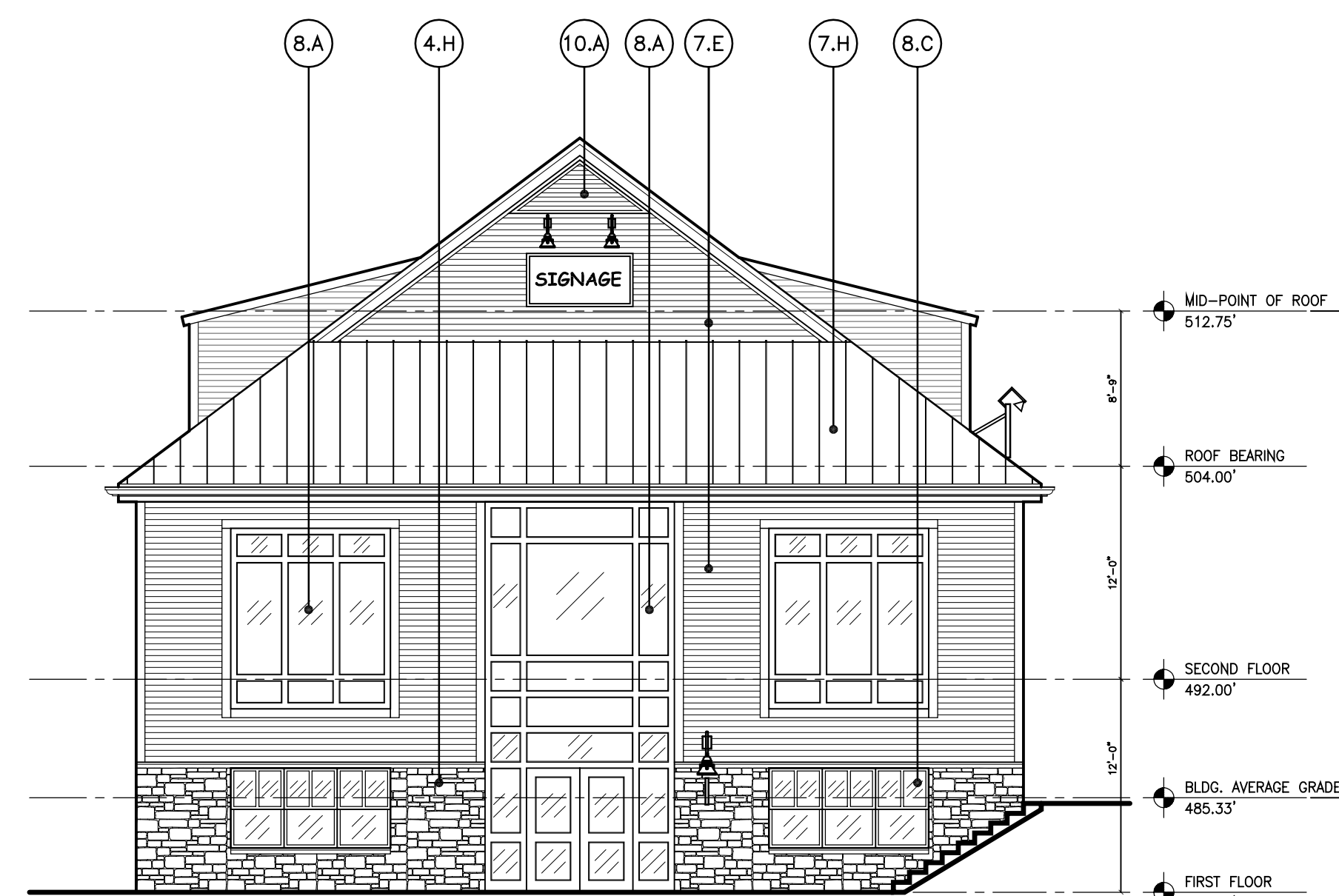
- (10.A) FACTORY KYNAR FINISHED ALUMINUM LOUVER, WITH INSECT SCREEN
- (10.B) RUBBER TRUCK BUMPERS



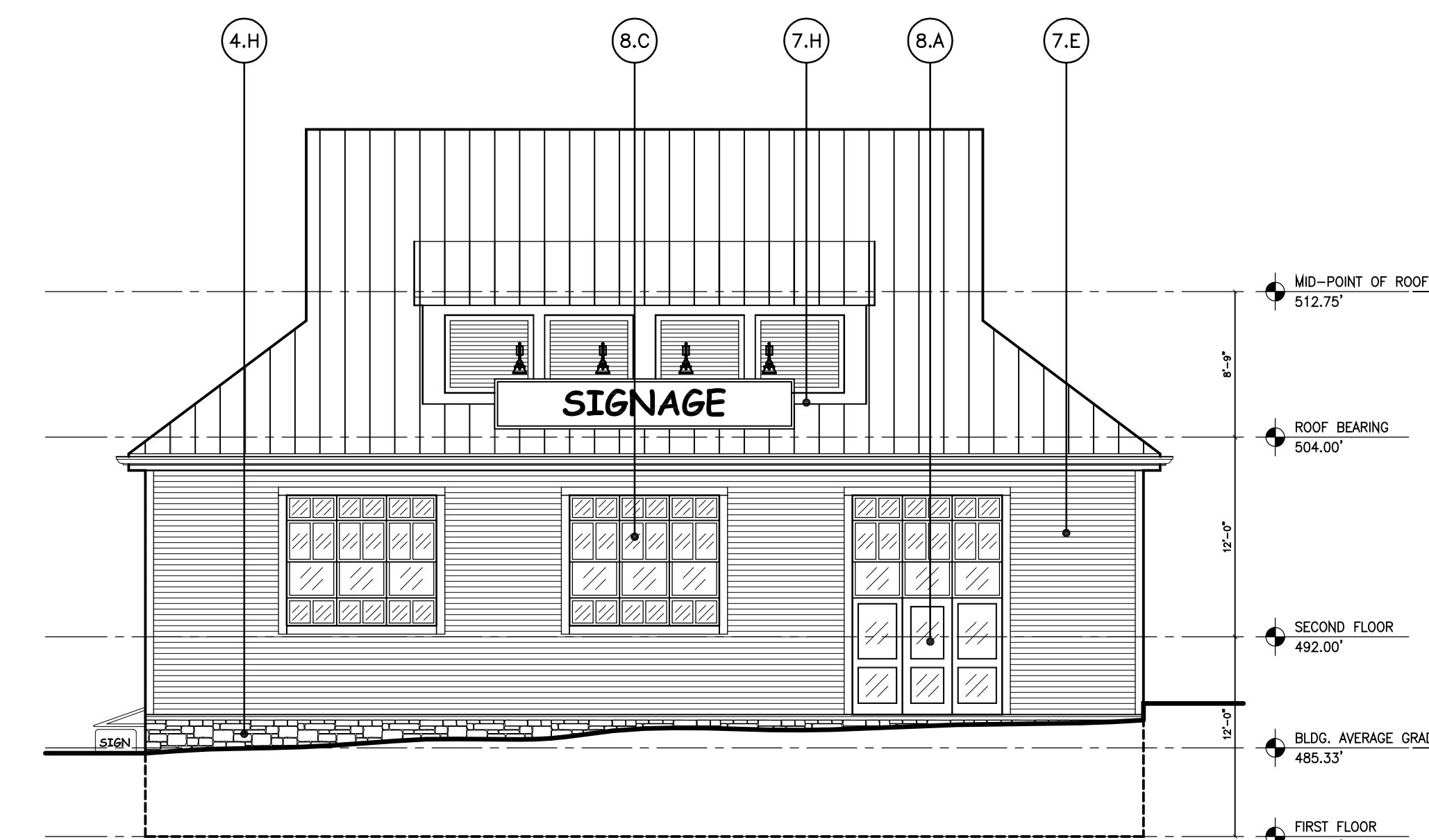
7 WEST ELEVATION
B1 A2.01 SCALE: 1/8"=1'-0"



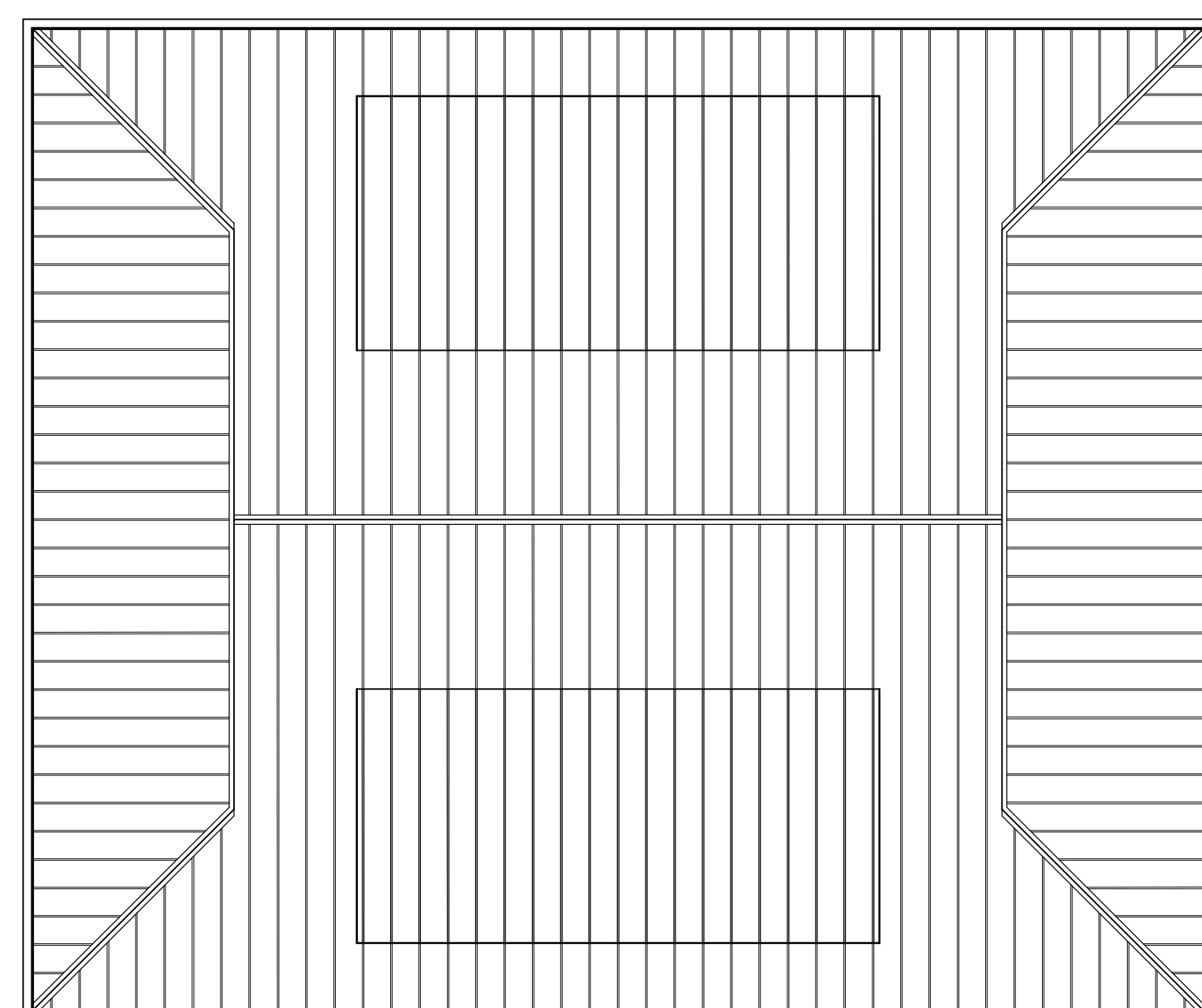
6 SOUTH ELEVATION
B1 A2.01 SCALE: 1/8"=1'-0"



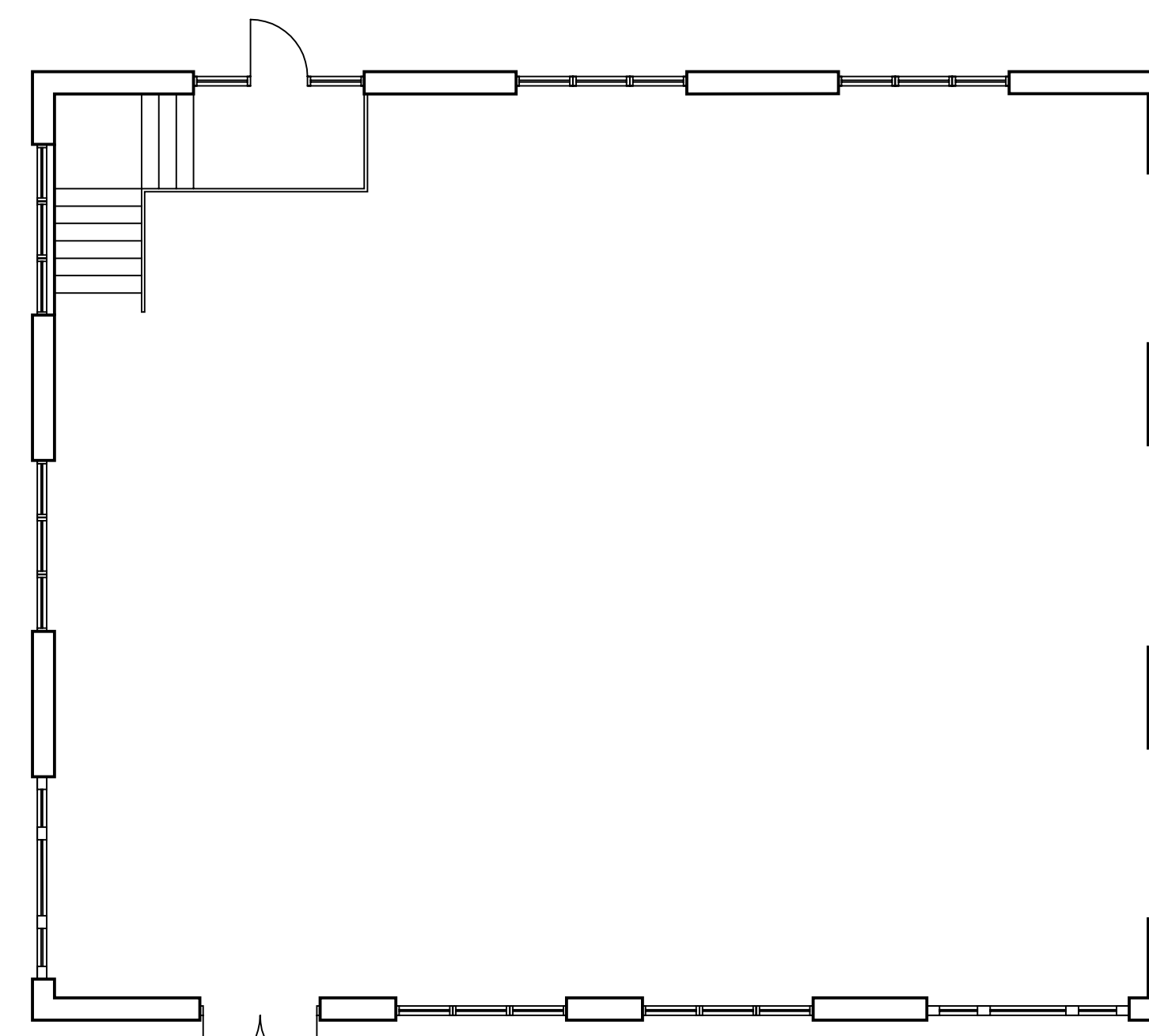
5 EAST ELEVATION
B1 A2.01 SCALE: 1/8"=1'-0"



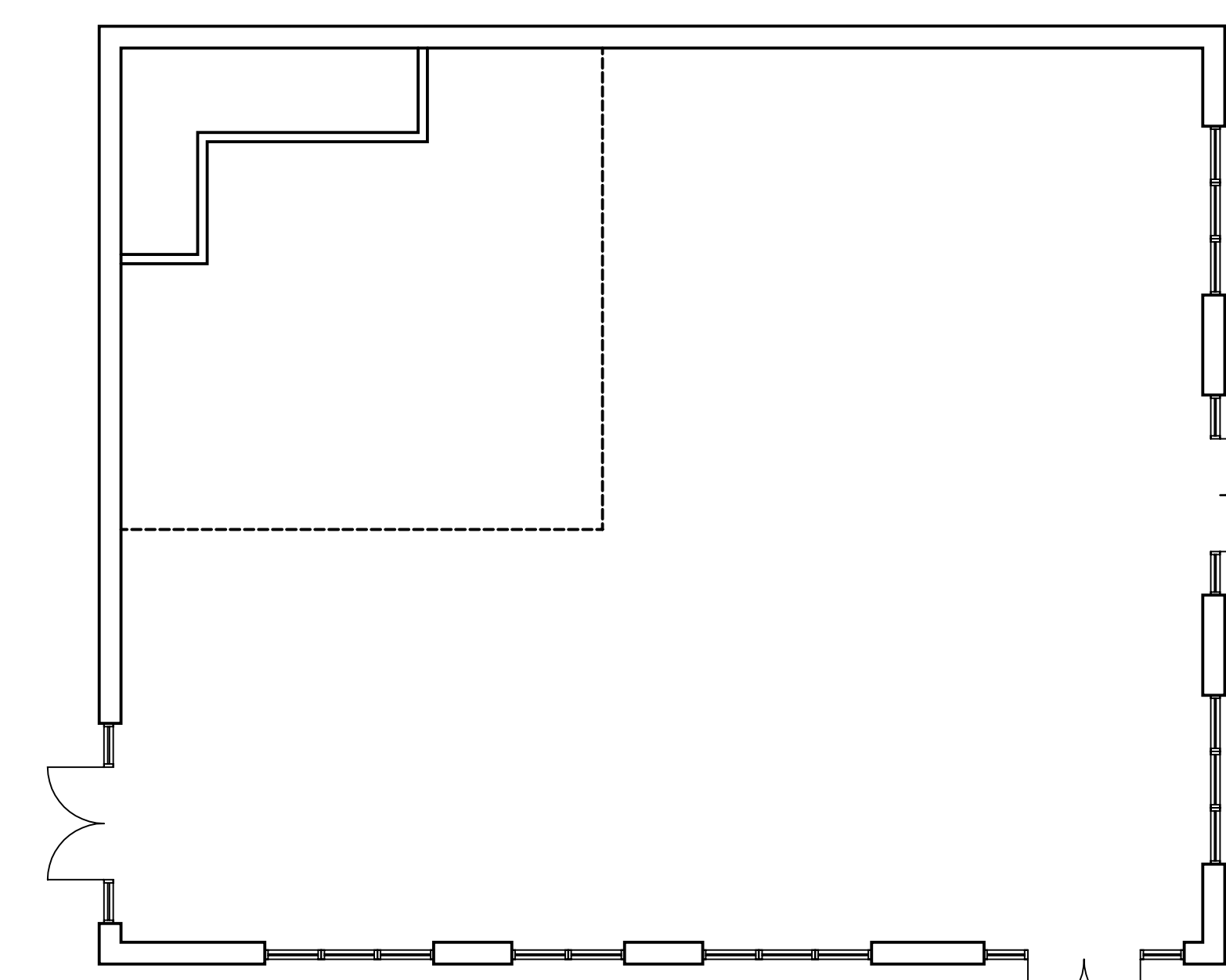
4 NORTH ELEVATION
B1 A2.01 SCALE: 1/8"=1'-0"



3 ROOF PLAN
B1 A2.01 SCALE: 1/8"=1'-0"



2 SECOND FLOOR PLAN
B1 A2.01 SCALE: 1/8"=1'-0"



1 FIRST FLOOR PLAN
B1 A2.01 SCALE: 1/8"=1'-0"

DEVELOPER
NICHOLS DEVELOPEMENT, LLC

18623 BROOKE RD.
SANDY SPRING, MD 20886
301-924-5258

DESIGN ARCHITECT
ALMY ARCHITECTS

11006 KENILWORTH AVE.
GARRETT PARK, MD 20896
301-949-7813

CIVIL ENGINEER
MACRIS, HENDRICKS,
& GLASCOCK, P.A.
9220 WORTHMAN RD., SUITE 120
MONTGOMERY VILLAGE, MD 20886
301-670-0840

STRUCTURAL ENGINEER
MECHANICAL/ELECTRICAL
/PLUMBING ENGINEER

ANCONA & ASSOCIATES, INC.
1888 VILLAGE GREEN, SUITE 201
CROFTON, MD 21114
301-261-6936

ARCHITECT
DEAN
Smolen + Emr
11850 PARKLAWN DRIVE
ROCKVILLE, MD 20850
301-770-0177

PROFESSIONAL SEAL:

**NOT FOR
CONSTRUCTION**

PRINTS ISSUED

NO.	DESCRIPTION	DATE
1	PROGRESS SET	10/18/07

ASHTON MEETING PLACE
NEW HAMPSHIRE AVE.
& MD ROUTE 108
ASHTON, MARYLAND

NEW FACILITY

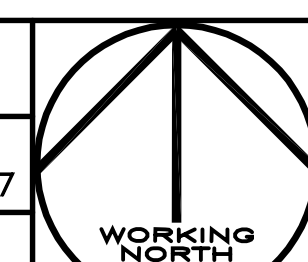
SHEET TITLE
BUILDING 1
RETAIL
FLOOR PLANS, ROOF PLAN,
AND ELEVATIONS

PROJECT NO.
04004.05

DATE
Sep. 20, 2007

SCALE
AS NOTED

SHEET NO.



B1 A2.01