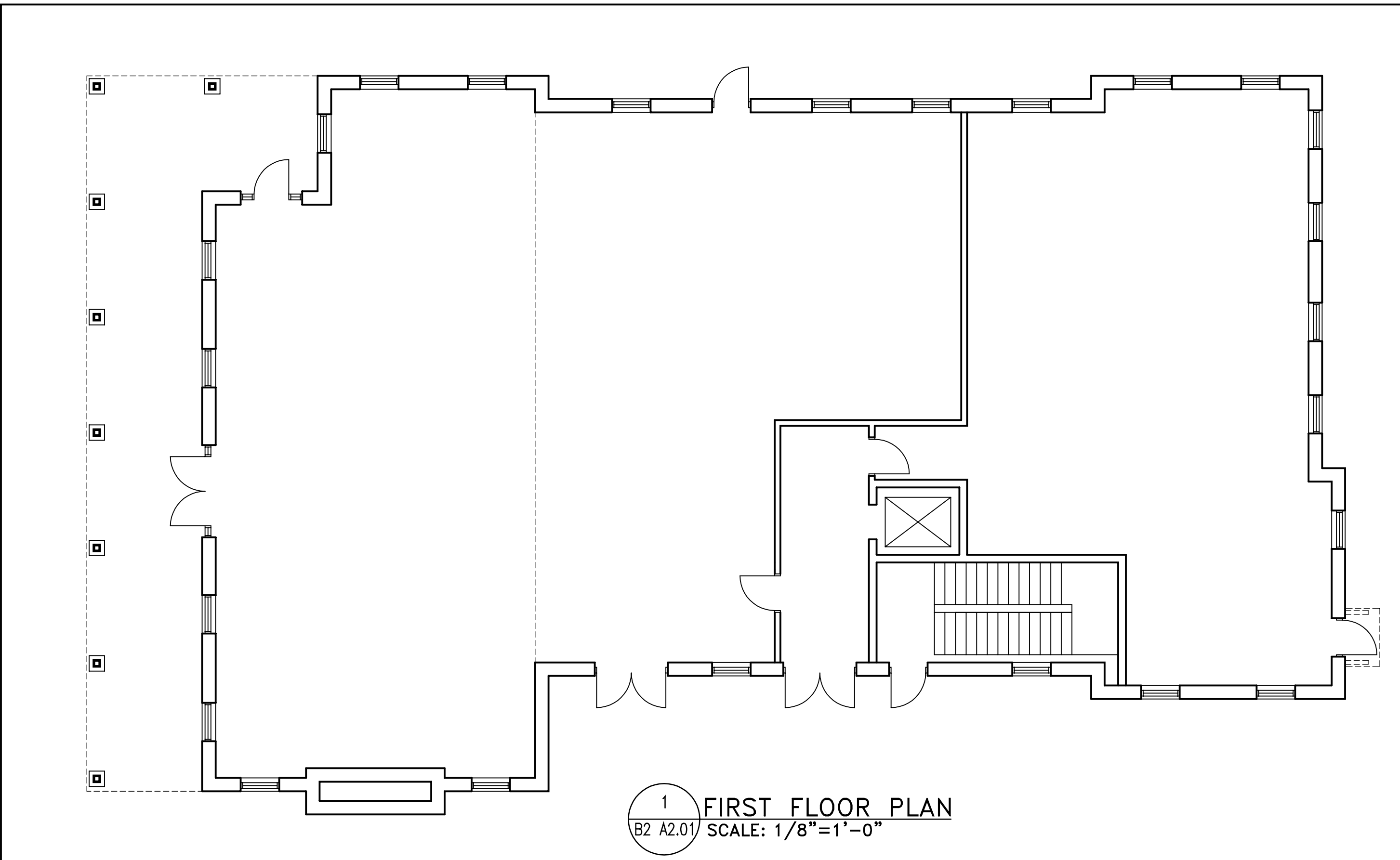
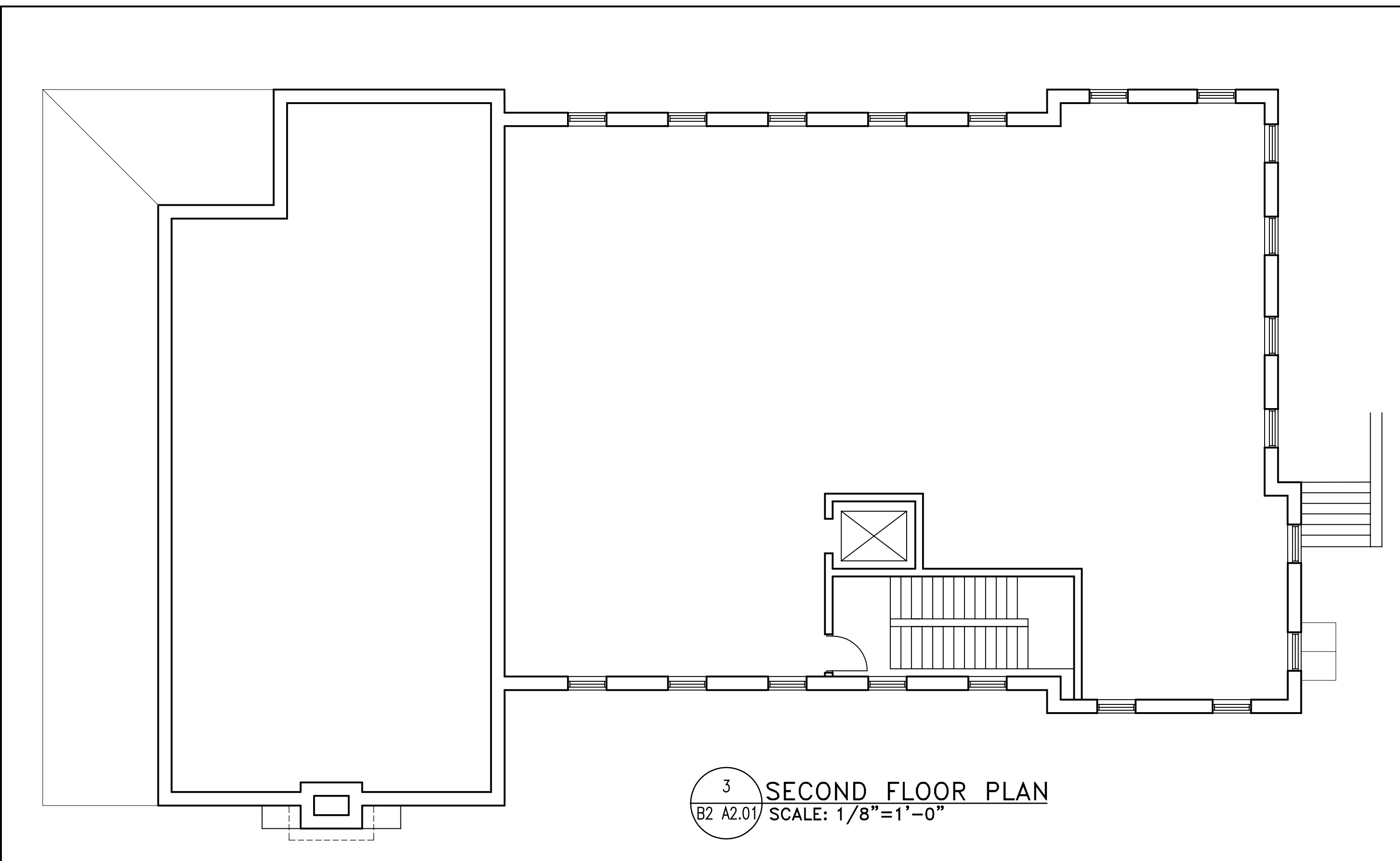
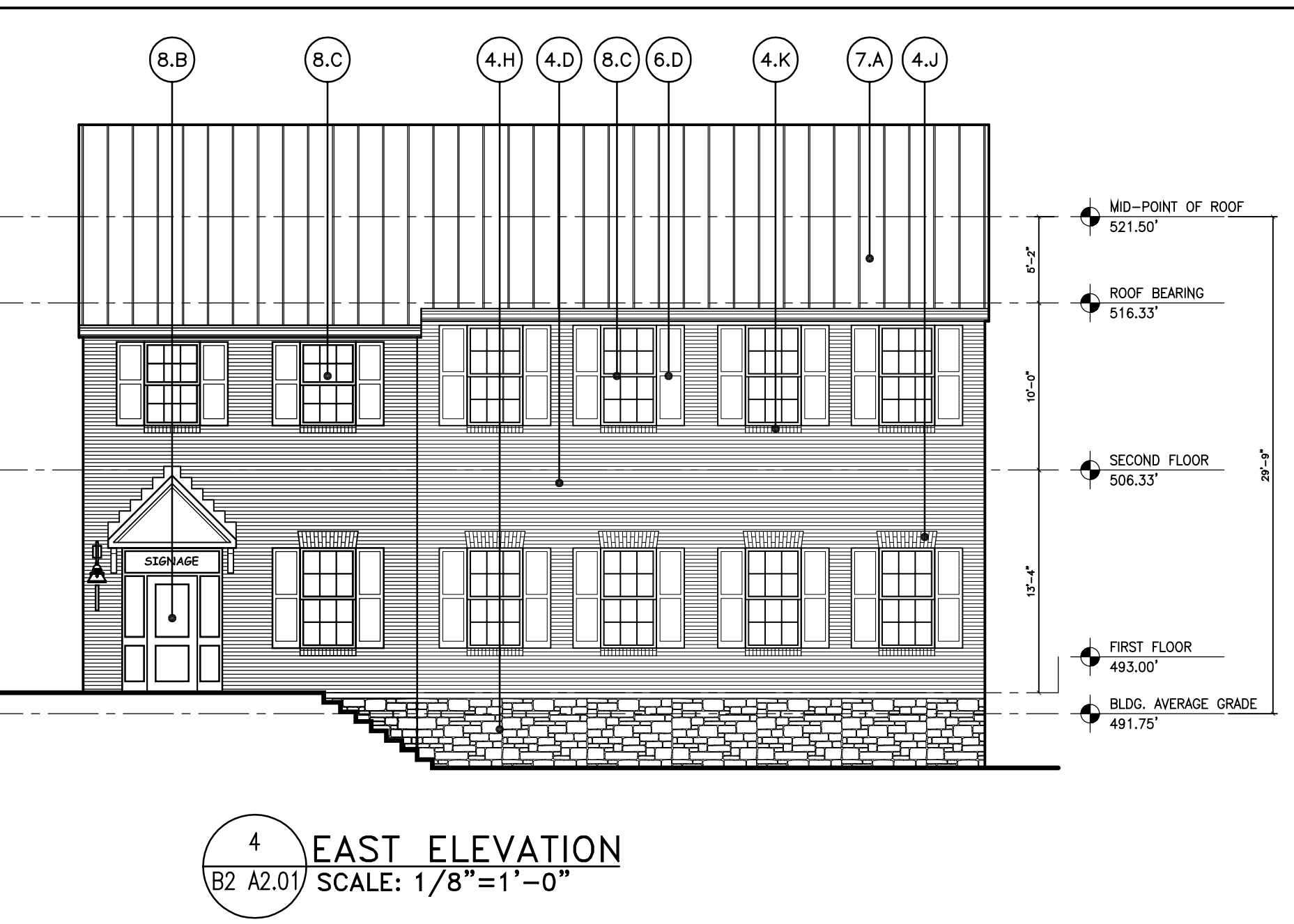
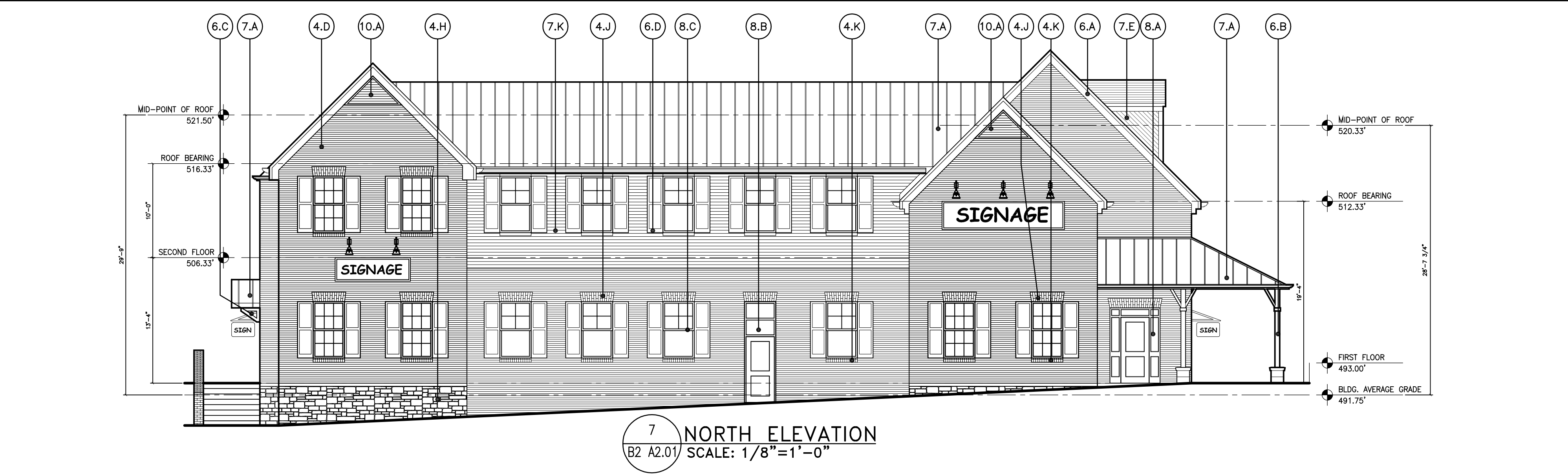
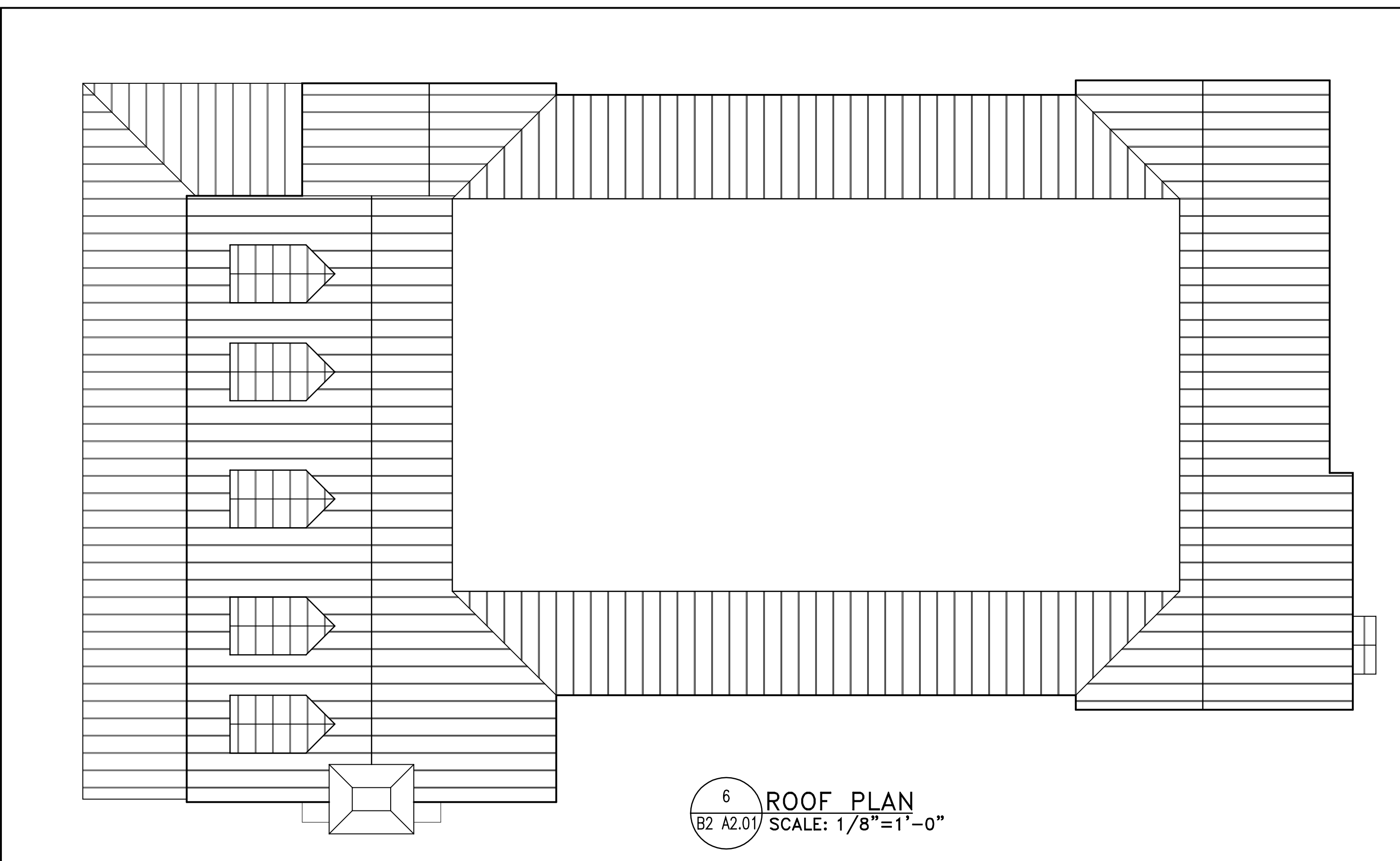


- ELEVATION LEGEND**
- DIVISION 3 - CONCRETE**
- 3.A PRE-CAST SIMULATED LIMESTONE ARCH
- DIVISION 4 - MASONRY**
- 4.A RUNNING BOND BRICK (TYPE 1 - DISTRESSED BRICK PAINTED WHITE)
  - 4.B RUNNING BOND BRICK (TYPE 2 - CALVERT ROSE SMOOTH BRICK)
  - 4.C RUNNING BOND BRICK (TYPE 3 - CALVERT 40 MOD #5141)
  - 4.D RUNNING BOND BRICK (TYPE 4 - CONTINENTAL 594 MOD #5639)
  - 4.E RUNNING BOND BRICK (TYPE 5 - OLD RICHMOND 3-115)
  - 4.F RUNNING BOND BRICK (TYPE 6 - STD. 475 MOD)
  - 4.G RUNNING BOND BRICK (TYPE 7 - SANTA FE 3-542)
  - 4.H CULTURED STONE FACING MATERIAL
  - 4.J 12" BRICK "JACK-ARCH"
  - 4.K BRICK SILL COURSE
  - 4.L BRICK SOLDIER COURSE
  - 4.M SPLIT FACE CONCRETE MASONRY UNITS (YBP-72)
  - 4.N BRICK QUINING
  - 4.O BRICK ROWLOCK COURSE
  - 4.P BRICK HEADER COURSE
  - 4.Q BRICK ARCH
- DIVISION 5 - METALS**
- 5.A ALUMINUM GUTTER AND DOWNSPOUT SYSTEM
- DIVISION 6 - WOOD & PLASTICS**
- 6.A SIMULATED WOOD TRIM BOARD (VARIOUS SIZES)
  - 6.B SIMULATED WOOD COLUMN COVERS (FRP)
  - 6.C SIMULATED WOOD DECORATIVE BRACKETS
  - 6.D SIMULATED WOOD SHUTTERS
- DIVISION 7 - THERMAL & MOISTURE PROTECTION**
- 7.A PAC-CLAD STANDING SEAM METAL ROOFING SYSTEM, SEAMS TO BE 18" O.C. (ZINC)
  - 7.B ARCHITECTURAL ASPHALT SHINGLE SYSTEM (SIMULATED SLATE ROOF)
  - 7.C ARCHITECTURAL ASPHALT SHINGLE ROOFING SYSTEM (LIGHT GREY)
  - 7.D FABRIC AWNING
  - 7.E HARDI-PLANK HORIZONTAL LAP SIDING SYSTEM (NAVAJO WHITE)
  - 7.F HARDI-PANEL VERTICAL SIDING SYSTEM (KHAKI BROWN)
  - 7.G BRICK EXPANSION JOINT
  - 7.H PAC-CLAD STANDING SEAM METAL FLOORING SYSTEM, SEAMS TO BE 18" O.C. (MATTE BLACK)
  - 7.J ARCHITECTURAL ASPHALT SHINGLE ROOFING SYSTEM (DARK GREY)
  - 7.K HARDI-PLANK HORIZONTAL LAP BATTON SIDING SYSTEM (KHAKI BROWN)
  - 7.L PAC-CLAD STANDING SEAM METAL ROOFING SYSTEM, SEAMS TO BE 18" O.C. (SILVER)
- DIVISION 8 - DOORS & WINDOWS**
- 8.A ALUMINUM STOREFRONT
  - 8.B HOLLOW METAL DOOR AND FRAME
  - 8.C ALUMINUM DOUBLE HUNG WINDOW SYSTEM
  - 8.D JAMB MOUNTED, INSULATED METAL ROLL-UP DOOR
  - 8.E TELLER WINDOW
- DIVISION 10 - SPECIALTIES**
- 10.A FACTORY KYNAR FINISHED ALUMINUM LOUVER, WITH INSECT SCREEN
  - 10.B RUBBER TRUCK BUMPERS



DEVELOPER  
NICHOLS DEVELOPEMENT, LLC  
18623 BROOKE RD.  
SANDY SPRING, MD 20886  
301-924-5258

DESIGN ARCHITECT  
ALMY ARCHITECTS  
11006 KENILWORTH AVE.  
GARRETT PARK, MD 20896  
301-949-7813

CIVIL ENGINEER  
MACRIS, HENDRICKS,  
& GLASCOCK, P.A.  
9220 WIGHTMAN RD., SUITE 120  
MONTGOMERY VILLAGE, MD 20886  
301-670-0840

STRUCTURAL ENGINEER  
MECHANICAL/ELECTRICAL  
/PLUMBING ENGINEER  
ANCONA & ASSOCIATES, INC.  
1808 VILLAGE GREEN, SUITE 201  
CROFTON, MD 21114  
301-261-6936

ARCHITECT  
**SEMA**  
S m o i e n t e m t  
11820 PARKLAWN DRIVE  
ROCKVILLE, MD 20852  
301-770-0177

PROFESSIONAL SEAL:  
**NOT FOR CONSTRUCTION**

PRINTS ISSUED

NO.	DESCRIPTION	DATE
1	PROGRESS SET	10/18/07

ASHTON MEETING PLACE  
NEW HAMPSHIRE AVE.  
& MD ROUTE 108  
ASHTON, MARYLAND

NEW FACILITY

SHEET TITLE  
BUILDING 2  
RESTAURANT & RETAIL  
FLOOR PLANS, ROOF PLAN,  
AND ELEVATIONS

PROJECT NO.  
04004.05

DATE  
Sep. 20, 2007

SCALE  
AS NOTED

SHEET NO.

**B2 A2.01**