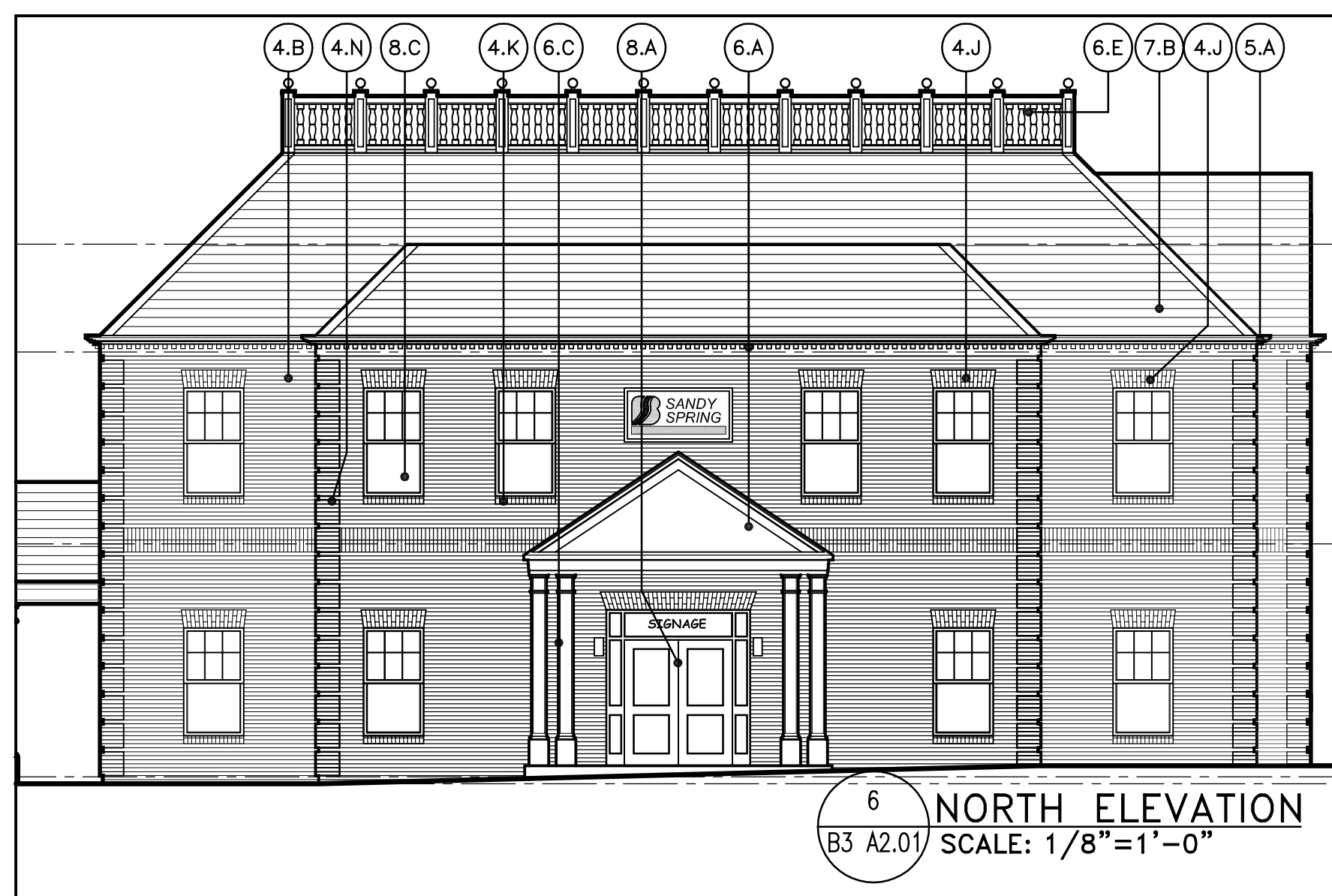


7 SOUTH ELEVATION
B3 A2.01 SCALE: 1/8"=1'-0"



6 NORTH ELEVATION
B3 A2.01 SCALE: 1/8"=1'-0"



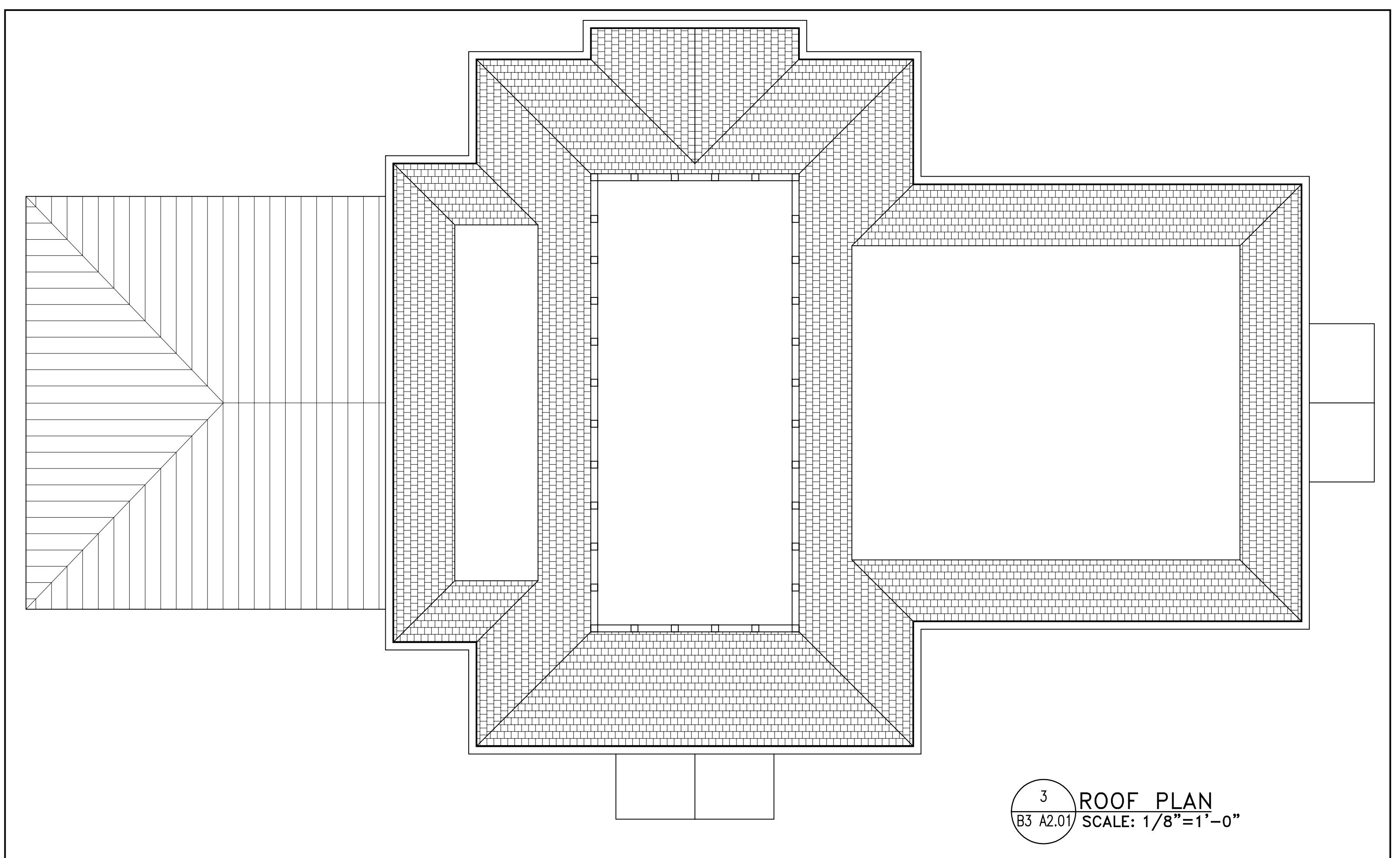
5 WEST ELEVATION
B3 A2.01 SCALE: 1/8"=1'-0"



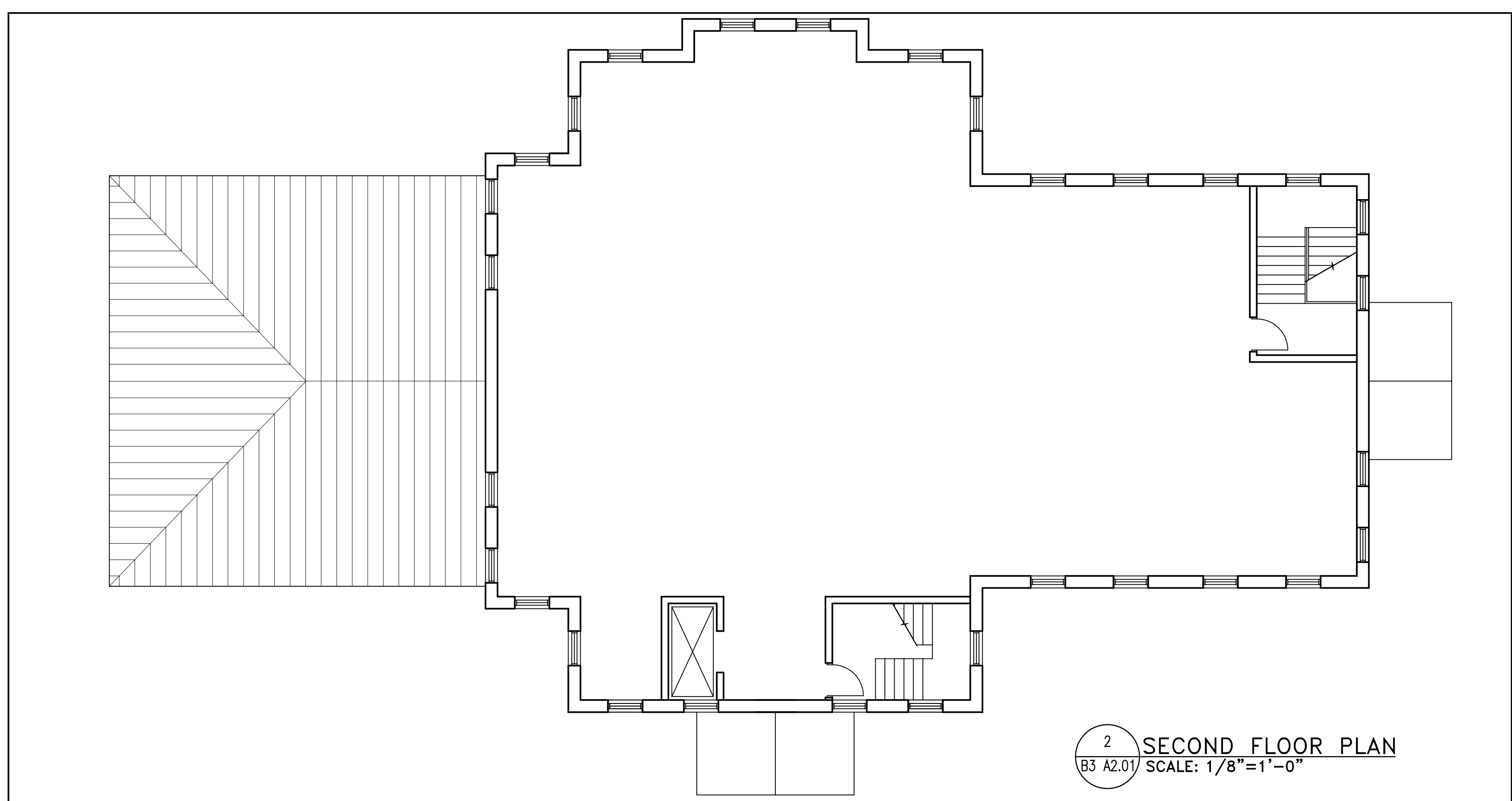
4 EAST ELEVATION
B3 A2.01 SCALE: 1/8"=1'-0"

(X) ELEVATION LEGEND

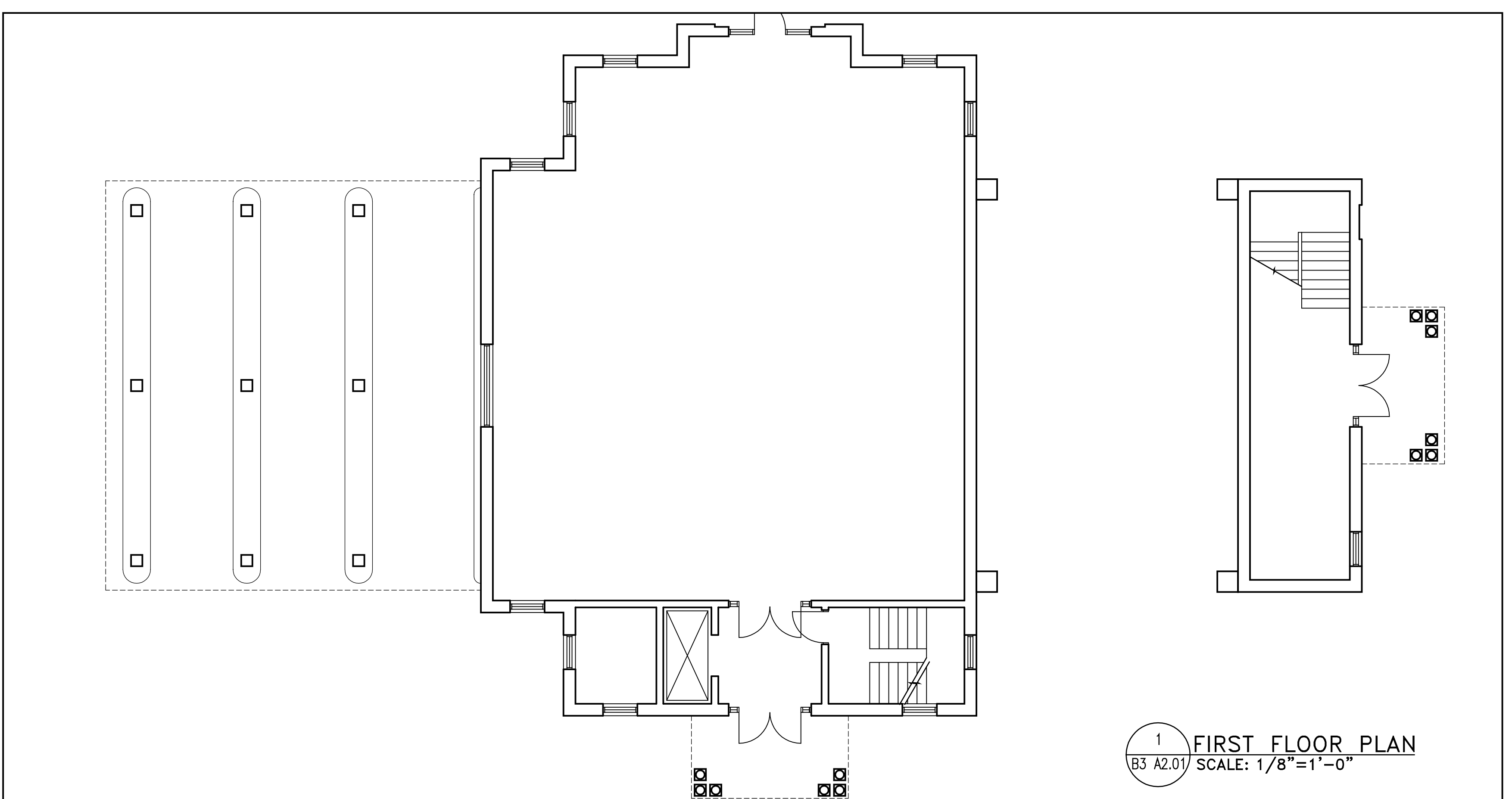
<p>DIVISION 3 - CONCRETE</p> <p>(3.A) PRE-CAST SIMULATED LIMESTONE ARCH</p> <p>DIVISION 4 - MASONRY</p> <p>(4.A) RUNNING BOND BRICK (TYPE 1 - DISTRESSED BRICK PAINTED WHITE)</p> <p>(4.B) RUNNING BOND BRICK (TYPE 2 - CALVERT ROSE SMOOTH BRICK)</p> <p>(4.C) RUNNING BOND BRICK (TYPE 3 - CALVERT 40 MOD #5141)</p> <p>(4.D) RUNNING BOND BRICK (TYPE 4 - CONTINENTAL 594 MOD #5639)</p> <p>(4.E) RUNNING BOND BRICK (TYPE 5 - OLD RICHMOND 3-115)</p> <p>(4.F) RUNNING BOND BRICK (TYPE 6 - STD. 475 MOD)</p> <p>(4.G) RUNNING BOND BRICK (TYPE 7 - SANTA FE 3-542)</p> <p>(4.H) CULTURED STONE FACING MATERIAL</p> <p>(4.I) 12" BRICK "JACK-ARCH"</p> <p>(4.K) BRICK SILL COURSE</p> <p>(4.L) BRICK SOLDIER COURSE</p> <p>(4.M) SPLIT FACE CONCRETE MASONRY UNITS (YBP-72)</p> <p>(4.N) BRICK QUOINING</p> <p>(4.O) BRICK ROWLOCK COURSE</p> <p>(4.P) BRICK HEADER COURSE</p> <p>(4.Q) BRICK ARCH</p>	<p>DIVISION 5 - METALS</p> <p>(5.A) ALUMINUM GUTTER AND DOWNSPOUT SYSTEM</p> <p>DIVISION 6 - WOOD & PLASTICS</p> <p>(6.A) SIMULATED WOOD TRIM BOARD (VARIOUS SIZES)</p> <p>(6.B) SIMULATED WOOD COLUMN COVERS (FRP)</p> <p>(6.C) SIMULATED WOOD DECORATIVE BRACKETS</p> <p>(6.D) SIMULATED WOOD SHUTTERS</p> <p>DIVISION 7 - THERMAL & MOISTURE PROTECTION</p> <p>(7.A) PAC-CLAD STANDING SEAM METAL ROOFING SYSTEM, SEAMS TO BE 18" O.C. (ZINC)</p> <p>(7.B) ARCHITECTURAL ASPHALT SHINGLE SYSTEM (SIMULATED SLATE ROOF)</p> <p>(7.C) ARCHITECTURAL ASPHALT SHINGLE ROOFING SYSTEM (LIGHT GREY)</p> <p>(7.D) FABRIC AWNING</p> <p>(7.E) HARDI-PLANK HORIZONTAL LAP SIDING SYSTEM (NAVAJO WHITE)</p> <p>(7.F) HARDI-PANEL VERTICAL SIDING SYSTEM (KHAKI BROWN)</p> <p>(7.G) BRICK EXPANSION JOINT</p> <p>(7.H) PAC-CLAD STANDING SEAM METAL FLOORING SYSTEM, SEAMS TO BE 18" O.C. (MATTE BLACK)</p> <p>(7.J) ARCHITECTURAL ASPHALT SHINGLE ROOFING SYSTEM (DARK GREY)</p> <p>(7.K) HARDI-PLANK HORIZONTAL LAP BATTON SIDING SYSTEM (KHAKI BROWN)</p> <p>(7.L) PAC-CLAD STANDING SEAM METAL ROOFING SYSTEM, SEAMS TO BE 18" O.C. (SILVER)</p>	<p>DIVISION 8 - DOORS & WINDOWS</p> <p>(8.A) ALUMINUM STOREFRONT</p> <p>(8.B) HOLLOW METAL DOOR AND FRAME</p> <p>(8.C) ALUMINUM DOUBLE HUNG WINDOW SYSTEM</p> <p>(8.D) JAMB MOUNTED, INSULATED METAL ROLL-UP DOOR</p> <p>(8.E) TELLER WINDOW</p> <p>DIVISION 10 - SPECIALTIES</p> <p>(10.A) FACTORY KYNAR FINISHED ALUMINUM LOUVER, WITH INSECT SCREEN</p> <p>(10.B) RUBBER TRUCK BUMPERS</p>
--	---	---



3 ROOF PLAN
B3 A2.01 SCALE: 1/8"=1'-0"



2 SECOND FLOOR PLAN
B3 A2.01 SCALE: 1/8"=1'-0"



1 FIRST FLOOR PLAN
B3 A2.01 SCALE: 1/8"=1'-0"

DEVELOPER
NICHOLS DEVELOPEMENT, LLC
18623 BROOKE RD.
SANDY SPRING, MD 20886
301-924-5258

DESIGN ARCHITECT
ALMY ARCHITECTS
11006 KENILWORTH AVE.
GARRETT PARK, MD 20896
301-949-7813

CIVIL ENGINEER
MACRIS, HENDRICKS,
& GLASCOCK, P.A.
9220 WORTHMAN RD., SUITE 120
MONTGOMERY VILLAGE, MD 20886
301-670-0840

STRUCTURAL ENGINEER
MECHANICAL/ELECTRICAL
/PLUMBING ENGINEER
ANCONA & ASSOCIATES, INC.
1888 VILLAGE GREEN, SUITE 201
CROFTON, MD 21114
301-261-6936

ARCHITECT
SEAN
Smolen + Emr
11850 PARKWAY DRIVE
ROCKVILLE, MD 20852
301-770-0177

PROFESSIONAL SEAL:
NOT FOR CONSTRUCTION

PRINTS ISSUED

NO.	DESCRIPTION	DATE
1	PROGRESS SET	10/18/07

ASHTON MEETING PLACE
NEW HAMPSHIRE AVE.
& MD ROUTE 108
ASHTON, MARYLAND

NEW FACILITY

SHEET TITLE
BUILDING 3
BANK & OFFICE
FLOOR PLANS, ROOF PLAN
AND EXTERIOR ELEVATIONS

PROJECT NO.
04004.05

DATE
Sep. 20, 2007

SCALE
AS NOTED

SHEET NO.
B3 A2.01

SCALE FACTOR:

