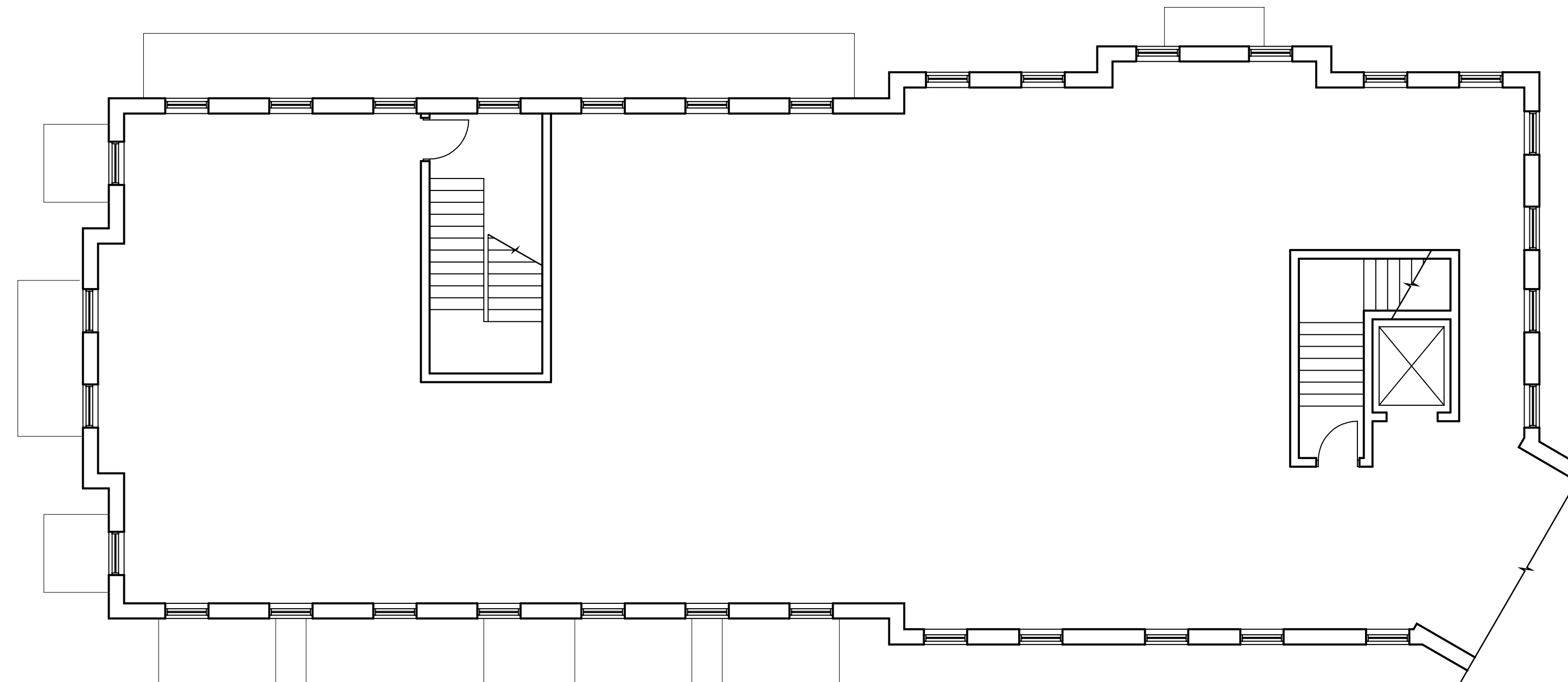
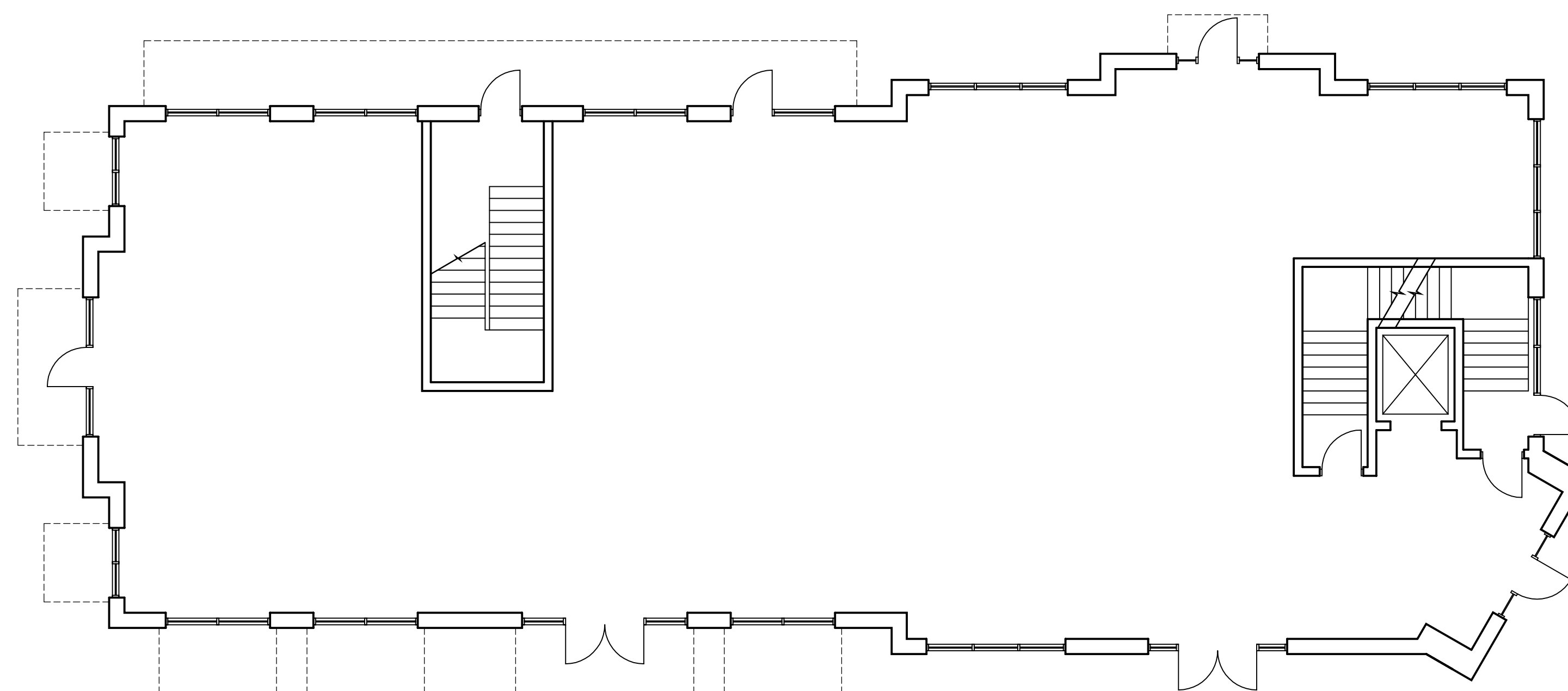


3 ROOF PLAN  
 (B5 A2.01) SCALE: 1/8"=1'-0"



2 SECOND FLOOR PLAN  
 (B5 A2.01) SCALE: 1/8"=1'-0"



1 FIRST FLOOR PLAN  
 (B5 A2.01) SCALE: 1/8"=1'-0"

DEVELOPER  
 NICHOLS DEVELOPEMENT, LLC

18623 BROOKE RD.  
 SANDY SPRING, MD 20860  
 301-924-5256

DESIGN ARCHITECT  
 ALMY ARCHITECTS

11006 KENILWORTH AVE.  
 GARRETT PARK, MD 20896  
 301-949-7813

CIVIL ENGINEER  
 MACRIS, HENDRICKS,  
 & GLASCOCK, P.A.  
 9220 WIGHTMAN RD., SUITE 120  
 MONTGOMERY VILLAGE, MD 20886  
 301-670-0840

STRUCTURAL ENGINEER  
 MECHANICAL/ELECTRICAL  
 /PLUMBING ENGINEER

ANCONA & ASSOCIATES, INC.  
 1888 VILLAGE GREEN, SUITE 201  
 CROFTON, MD 21114  
 301-261-6936

ARCHITECT  
  
 SMOLLEN E.M.T.  
 11850 PARKWAY DRIVE  
 ROCKVILLE, MD 20852  
 301-770-0177

PROFESSIONAL SEAL:

**NOT FOR  
 CONSTRUCTION**

PRINTS ISSUED

NO.	DESCRIPTION	DATE
1	PROGRESS SET	10/18/07

ASHTON MEETING PLACE  
 NEW HAMPSHIRE AVE.  
 & MD ROUTE 108  
 ASHTON, MARYLAND

NEW FACILITY

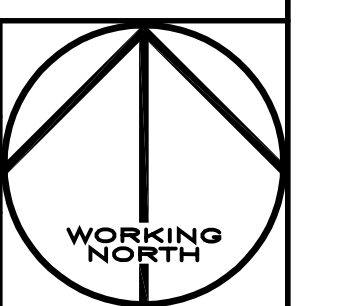
SHEET TITLE  
 BUILDING 5  
 RETAIL & OFFICE  
 FLOOR AND ROOF PLANS

PROJECT NO.  
 04004.05

DATE  
 Sep. 20, 2007

SCALE  
 AS NOTED

SHEET NO.



**B5 A2.01**