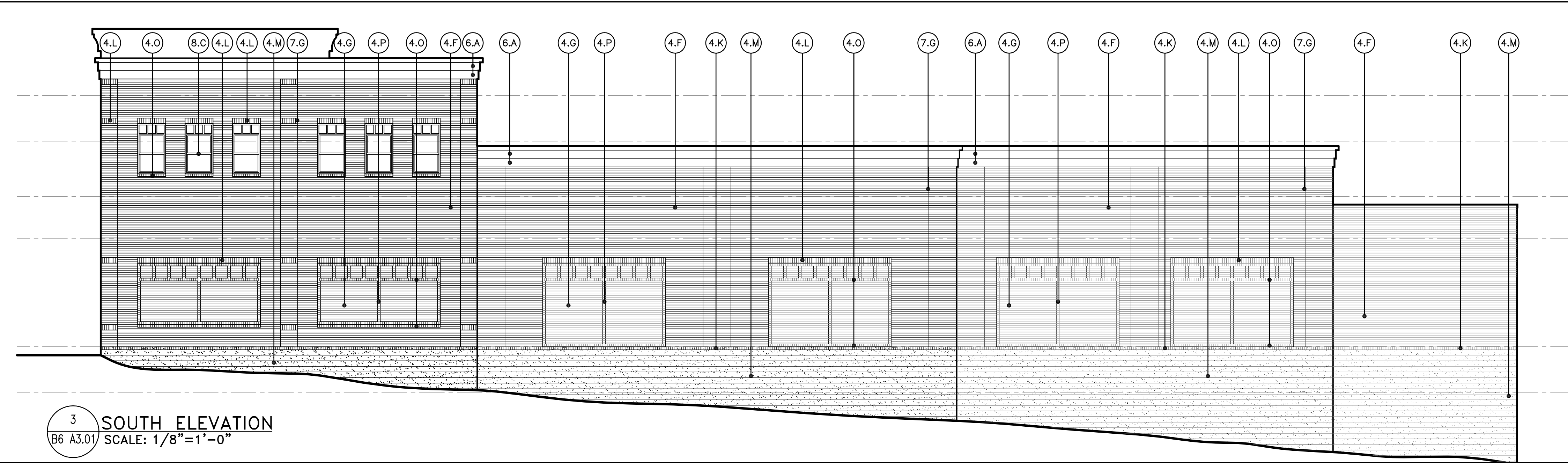
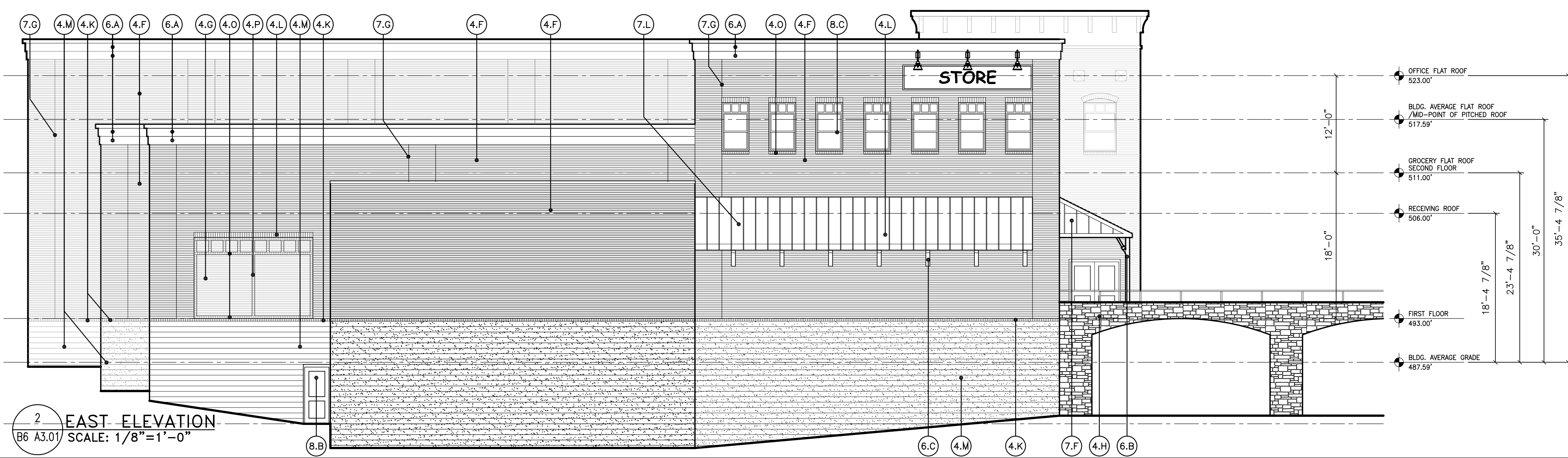


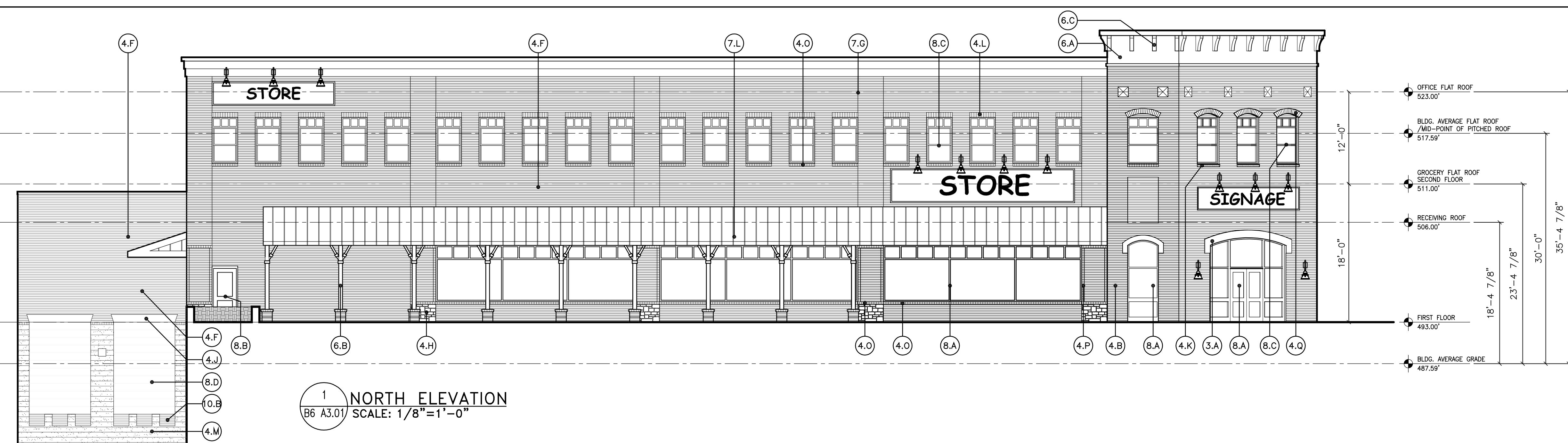
4 WEST ELEVATION
B6 A3.01 SCALE: 1/8"=1'-0"



3 SOUTH ELEVATION
B6 A3.01 SCALE: 1/8"=1'-0"



2 EAST ELEVATION
B6 A3.01 SCALE: 1/8"=1'-0"



1 NORTH ELEVATION
B6 A3.01 SCALE: 1/8"=1'-0"

(X) ELEVATION LEGEND

- DIVISION 3 - CONCRETE**
 (3A) PRE-CAST SIMULATED LIMESTONE ARCH
- DIVISION 4 - MASONRY**
 (4A) RUNNING BOND BRICK (TYPE 1 - DISTRESSED BRICK PAINTED WHITE)
 (4B) RUNNING BOND BRICK (TYPE 2 - CALVERT ROSE SMOOTH BRICK)
 (4C) RUNNING BOND BRICK (TYPE 3 - CALVERT 40 MOD #5141)
 (4D) RUNNING BOND BRICK (TYPE 4 - CONTINENTAL 594 MOD #5639)
 (4E) RUNNING BOND BRICK (TYPE 5 - OLD RICHMOND 3-115)
 (4F) RUNNING BOND BRICK (TYPE 6 - STD. 475 MOD)
 (4G) RUNNING BOND BRICK (TYPE 7 - SANTA FE 3-542)
 (4H) CULTURED STONE FACING MATERIAL
 (4J) 12" BRICK "JACK-ARCH"
 (4K) BRICK SILL COURSE
 (4L) BRICK SOLDIER COURSE
 (4M) SPLIT FACE CONCRETE MASONRY UNITS (YBP-72)
 (4N) BRICK QUINING
 (4O) BRICK ROWLOCK COURSE
 (4P) BRICK HEADER COURSE
 (4Q) BRICK ARCH

- DIVISION 5 - METALS**
 (5A) ALUMINUM GUTTER AND DOWNSPOUT SYSTEM
- DIVISION 6 - WOOD & PLASTICS**
 (6A) SIMULATED WOOD TRIM BOARD (VARIOUS SIZES)
 (6B) SIMULATED WOOD COLUMN COVERS (FRP)
 (6C) SIMULATED WOOD DECORATIVE BRACKETS
 (6D) SIMULATED WOOD SHUTTERS
- DIVISION 7 - THERMAL & MOISTURE PROTECTION**
 (7A) PAC-CLAD STANDING SEAM METAL ROOFING SYSTEM, SEAMS TO BE 18" O.C. (ZINC)
 (7B) ARCHITECTURAL ASPHALT SHINGLE SYSTEM (SIMULATED SLATE ROOF)
 (7C) ARCHITECTURAL ASPHALT SHINGLE ROOFING SYSTEM (LIGHT GREY)
 (7D) FABRIC AWNING
 (7E) HARDI-PLANK HORIZONTAL LAP SIDING SYSTEM (NAVAJO WHITE)
 (7F) HARDI-PANEL VERTICAL SIDING SYSTEM (KHAKI BROWN)
 (7G) BRICK EXPANSION JOINT
 (7H) PAC-CLAD STANDING SEAM METAL ROOFING SYSTEM, SEAMS TO BE 18" O.C. (MATTE BLACK)
 (7J) ARCHITECTURAL ASPHALT SHINGLE ROOFING SYSTEM (DARK GREY)
 (7K) HARDI-PLANK HORIZONTAL LAP BATTON SIDING SYSTEM (KHAKI BROWN)
 (7L) PAC-CLAD STANDING SEAM METAL ROOFING SYSTEM, SEAMS TO BE 18" O.C. (SILVER)

- DIVISION 8 - DOORS & WINDOWS**
 (8A) ALUMINUM STOREFRONT
 (8B) HOLLOW METAL DOOR AND FRAME
 (8C) ALUMINUM DOUBLE HUNG WINDOW SYSTEM
 (8D) JAMB MOUNTED, INSULATED METAL ROLL-UP DOOR
 (8E) TELLER WINDOW
- DIVISION 10 - SPECIALTIES**
 (10A) FACTORY KYNAR FINISHED ALUMINUM LOUVER, WITH INSECT SCREEN
 (10B) RUBBER TRUCK BUMPERS

DEVELOPER
 NICHOLS DEVELOPEMENT, LLC
 18623 BROOKE RD.
 SANDY SPRING, MD 20886
 301-924-5258

DESIGN ARCHITECT
 ALMY ARCHITECTS
 11006 KENILWORTH AVE.
 GARRETT PARK, MD 20896
 301-949-7813

CIVIL ENGINEER
 MACRIS, HENDRICKS,
 & GLASCOCK, P.A.
 9220 WORTHMAN RD., SUITE 120
 MONROEMERY VILLAGE, MD 20886
 301-670-0840

STRUCTURAL ENGINEER
 MECHANICAL/ELECTRICAL
 /PLUMBING ENGINEER
 ANCONA & ASSOCIATES, INC.
 1888 VILLAGE GREEN, SUITE 201
 CROFTON, MD 21114
 301-261-6936

ARCHITECT
SEAN
 Smolen + Emr
 1180 PARKWAY DRIVE
 ROCKVILLE, MD 20852
 301-770-0177

PROFESSIONAL SEAL:
 NOT FOR CONSTRUCTION

PRINTS ISSUED

NO.	DESCRIPTION	DATE
1	PROGRESS SET	10/18/07

ASHTON MEETING PLACE
 NEW HAMPSHIRE AVE.
 & MD ROUTE 108
 ASHTON, MARYLAND

NEW FACILITY

SHEET TITLE
 BUILDING 6
 GROCERY & OFFICE
 EXTERIOR ELEVATIONS

PROJECT NO.
 04004.05

DATE
 Sep. 20, 2007

SCALE
 AS NOTED

SHEET NO.
B6 A3.01